

SOUTHDOWN GENETIC TRENDS

Year	No Lambs	8 Wk Weight	Mature Size	Litter Size	Maternal Ability	Scan Weight	Muscle Depth	Fat Depth	Lean Weight	Fat Weight	Gigot Musc'	FEC	Index
1990	300	0.29	0.11	0.00	-0.09	0.61	-0.16	0.08	0.00	0.00	0.00	-0.02	99.97
1991	336	0.23	0.05	0.00	0.09	0.58	-0.12	0.10	0.00	0.00	0.00	-0.02	99.85
1992	302	0.02	-0.09	0.01	0.15	0.31	-0.24	0.00	0.00	0.00	0.00	-0.02	97.92
1993	303	0.20	0.04	0.01	0.03	0.53	-0.12	0.07	0.00	0.00	0.00	-0.01	101.13
1994	283	0.09	0.04	0.00	-0.01	0.14	-0.14	0.03	0.00	0.00	0.00	-0.01	96.55
1995	342	0.18	0.05	0.00	-0.05	0.37	-0.08	0.13	0.00	0.00	0.00	-0.02	96.10
1996	221	0.27	0.06	0.01	0.11	0.75	0.08	0.14	0.00	0.00	0.00	-0.01	106.99
1997	195	0.25	0.13	0.02	0.09	0.59	0.01	0.19	0.00	0.00	0.00	-0.02	97.84
1998	141	0.19	0.11	0.01	0.10	0.60	0.03	0.00	0.00	0.00	0.00	0.00	112.94
1999	160	0.12	-0.02	0.02	-0.03	0.46	0.07	0.02	0.00	0.00	0.00	0.00	112.29
2000	176	0.11	-0.10	0.03	-0.19	0.59	0.09	-0.11	0.00	0.00	0.00	0.02	121.65
2001	25	-0.11	-0.32	0.01	-0.34	-0.07	-0.18	0.06	0.00	0.00	0.00	-0.02	90.71
2002	13	-0.17	-0.42	-0.03	-0.29	-0.06	-0.23	0.04	0.00	0.00	0.00	-0.02	90.30
2003	12	-0.20	-0.52	-0.05	-0.42	-0.27	-0.18	0.05	0.00	0.00	0.00	-0.02	88.07
2004	17	0.08	-0.09	-0.03	-0.25	0.11	0.02	0.05	0.00	0.00	0.00	0.00	103.11
2005	13	-0.30	-0.42	-0.02	-0.80	-0.41	-0.14	0.08	0.00	0.00	0.00	-0.02	80.85
2006	28	0.03	-0.28	-0.03	-0.15	0.27	-0.06	0.11	0.00	0.00	0.00	-0.01	96.47
2007	50	0.13	-0.58	0.02	-0.52	0.42	0.25	0.14	0.00	0.00	0.00	0.00	110.27
2008	421	0.00	-0.07	0.00	-0.03	0.03	0.01	0.02	0.00	0.00	0.00	0.00	102.18
2009	469	0.12	-0.03	0.01	-0.07	0.38	0.10	0.07	0.00	0.00	0.00	0.00	107.30
2010	502	0.05	-0.07	0.02	0.00	0.30	0.06	0.02	0.00	0.00	0.00	0.00	108.42
2011	761	0.17	-0.11	0.01	-0.11	0.59	0.18	0.06	0.00	0.00	0.00	0.01	114.61
2012	742	0.28	0.09	0.01	-0.09	0.74	0.22	0.05	0.00	0.00	0.00	0.01	119.48
2013	889	0.38	0.18	0.02	-0.04	0.92	0.36	-0.02	0.00	0.00	0.00	0.03	133.21
2014	638	0.43	0.19	0.01	0.01	1.11	0.42	-0.03	0.00	0.00	0.00	0.03	139.10
2015	782	0.65	0.40	0.01	0.15	1.52	0.74	0.00	0.00	0.00	0.00	0.05	157.68
2016	772	0.83	0.44	0.03	0.14	2.00	0.96	0.02	0.00	0.00	0.00	0.06	175.23
2017	759	1.06	0.72	0.03	0.16	2.36	1.13	-0.01	0.00	0.00	0.00	0.08	189.71
2018	691	1.22	0.93	0.02	0.28	2.52	1.11	-0.02	0.00	0.00	0.00	0.08	193.23

BLUP Run Number: 20085173 - 12/05/2018

1990 (01/08/1989 - 31/07/1990)

Number of Lambs: 691

Average 8 week weight EBV 1.220

Average mature size EBV 0.934

Average litter size EBV 0.02

Average maternal ability EBV 0.28

Average scan weight EBV 2.52

Average muscle depth EBV 1.11

Average fat depth EBV -0.02

Average lean weight EBV 0.00

Average fat weight EBV 0.00

Average gigot muscularity EBV 0.00

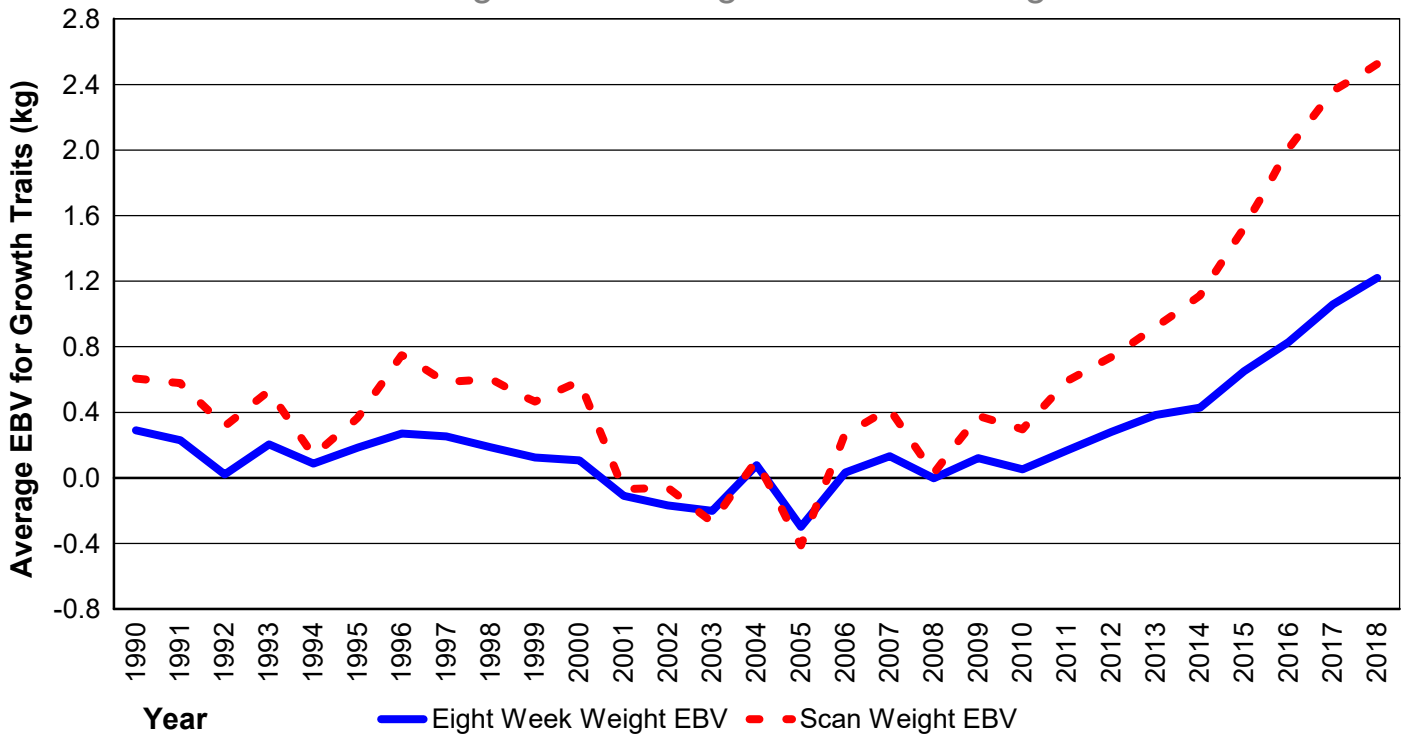
Average FEC EBV 0.08

Average 193.23

Average Index

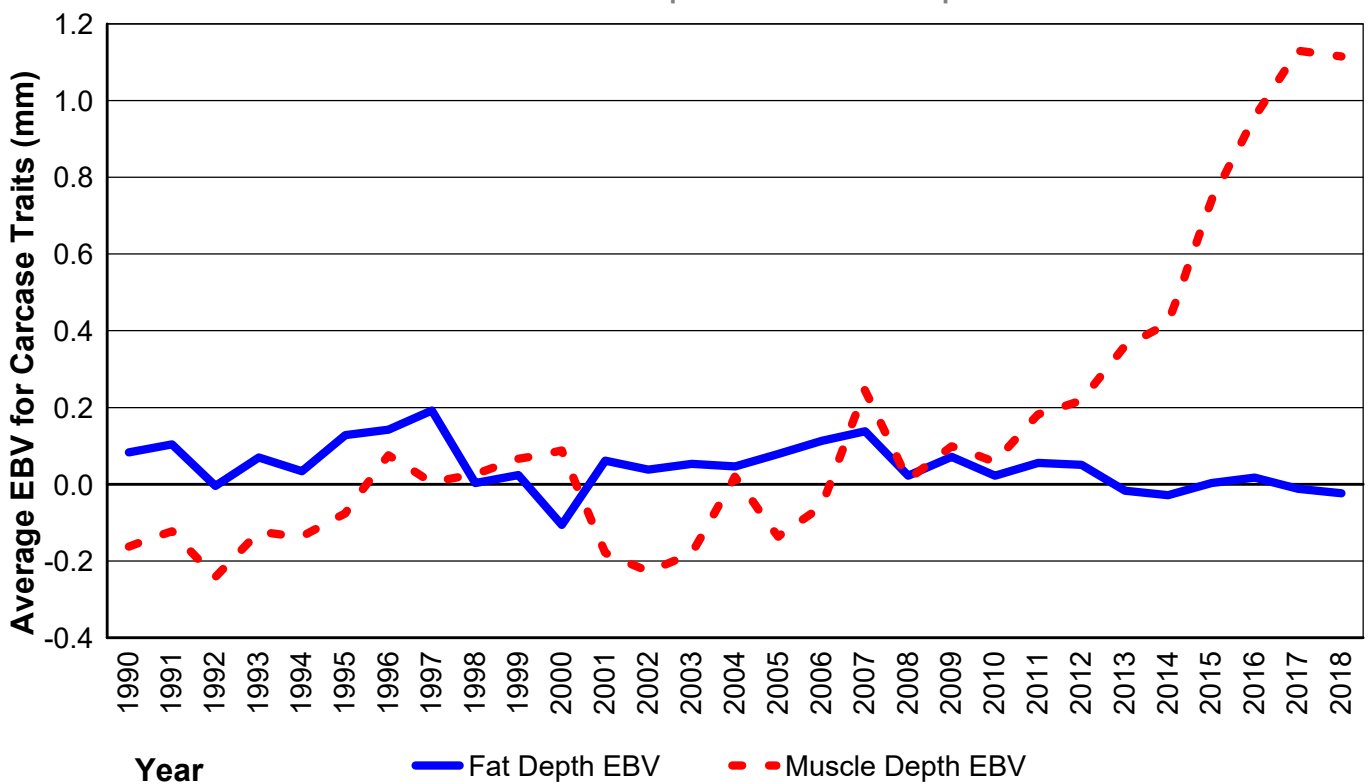
SOUTHDOWN GENETIC TRENDS 2018

Eight Week Weight and Scan Weight



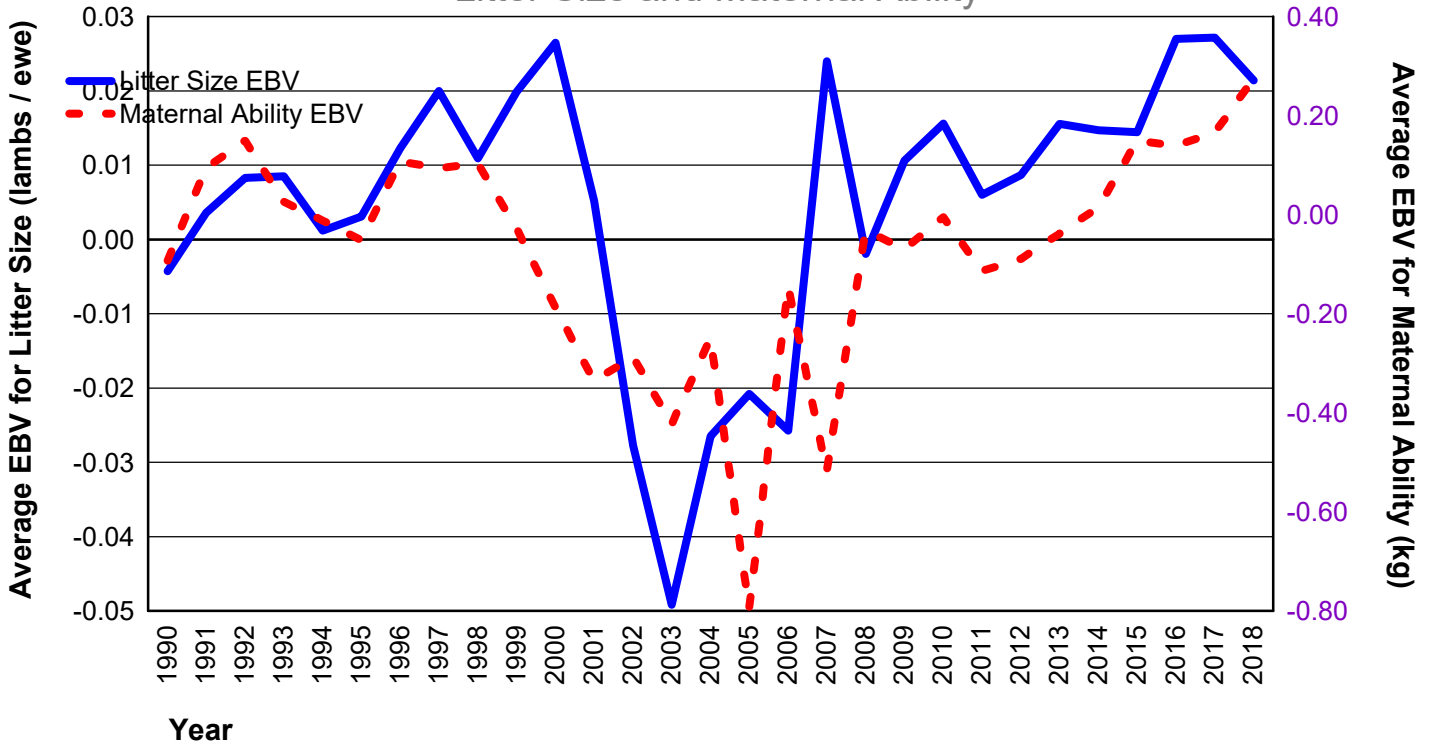
SOUTHDOWN GENETIC TRENDS 2018

Muscle Depth and Fat Depth



SOUTHDOWN GENETIC TRENDS 2018

Litter Size and Maternal Ability



GENETIC GAIN IN INDEX

