

Year	No Lambs	8 Wk Weight	Mature Size	Litter Size	Maternal Ability	Scan Weight	Muscle Depth	Fat Depth	Lean Weight	Fat Weight	Gigot Musc'	FEC	HILL Index	Index	BLUP Run ID
2000	4	-0.81	-3.10	-0.09	-0.87	-2.18	0.08	-0.04	-0.32	-0.47	0.00	0.00	0.13	0.00	20085209
2001	10	0.04	-0.63	0.00	0.05	0.01	-0.24	-0.12	0.10	-0.10	0.00	0.00	72.01	0.00	20085209
2002	5	-0.46	0.16	-0.05	0.18	-0.58	-0.15	0.30	-0.60	0.47	0.00	0.00	44.78	0.00	20085209
2003	48	-0.29	0.57	-0.02	0.29	-0.14	-0.36	0.13	-0.49	0.13	0.00	0.00	64.31	0.00	20085209
2004	75	-0.37	0.12	-0.03	0.25	-0.46	-0.18	0.19	-0.47	0.26	0.00	0.00	56.88	0.00	20085209
2005	466	-0.10	-0.11	-0.01	-0.03	-0.17	-0.03	0.03	-0.10	0.03	0.00	0.00	65.92	0.00	20085209
2006	214	-0.26	-0.34	-0.01	0.23	-0.48	-0.16	0.05	-0.26	0.02	0.00	0.00	64.29	0.00	20085209
2007	251	-0.18	0.38	0.01	0.52	-0.14	-0.06	0.06	-0.21	0.02	0.00	0.00	82.72	0.00	20085209
2008	916	-0.24	0.12	0.00	0.27	-0.18	-0.22	0.01	-0.26	-0.07	0.00	0.00	73.50	0.00	20085209
2009	1,624	-0.12	0.14	0.00	0.12	-0.05	-0.05	0.03	-0.11	0.03	0.00	0.00	73.16	0.00	20085209
2010	3,077	-0.09	0.03	0.00	0.06	-0.08	-0.03	0.02	-0.08	0.01	0.00	0.00	71.54	0.00	20085209
2011	1,975	-0.19	0.04	0.00	0.13	-0.06	0.03	0.04	-0.07	0.04	0.00	0.00	75.06	0.00	20085209
2012	3,473	-0.25	-0.17	-0.01	0.11	-0.23	0.03	0.04	-0.10	0.00	0.00	0.00	69.48	0.00	20085209
2013	3,358	-0.23	0.04	0.00	0.11	-0.11	0.08	0.03	-0.07	-0.03	0.00	0.00	73.85	0.00	20085209
2014	3,403	-0.16	0.27	0.01	0.24	0.18	0.06	0.02	0.02	0.04	0.00	0.00	83.72	0.00	20085209
2015	3,670	0.02	0.76	0.02	0.31	0.60	0.12	0.05	0.13	0.20	0.00	0.00	93.33	0.00	20085209
2016	3,946	0.04	0.98	0.03	0.27	0.81	0.15	0.04	0.18	0.20	0.00	0.00	99.01	0.00	20085209
2017	3,806	0.22	1.35	0.04	0.41	1.12	0.18	0.06	0.28	0.34	0.00	0.00	109.04	0.00	20085209

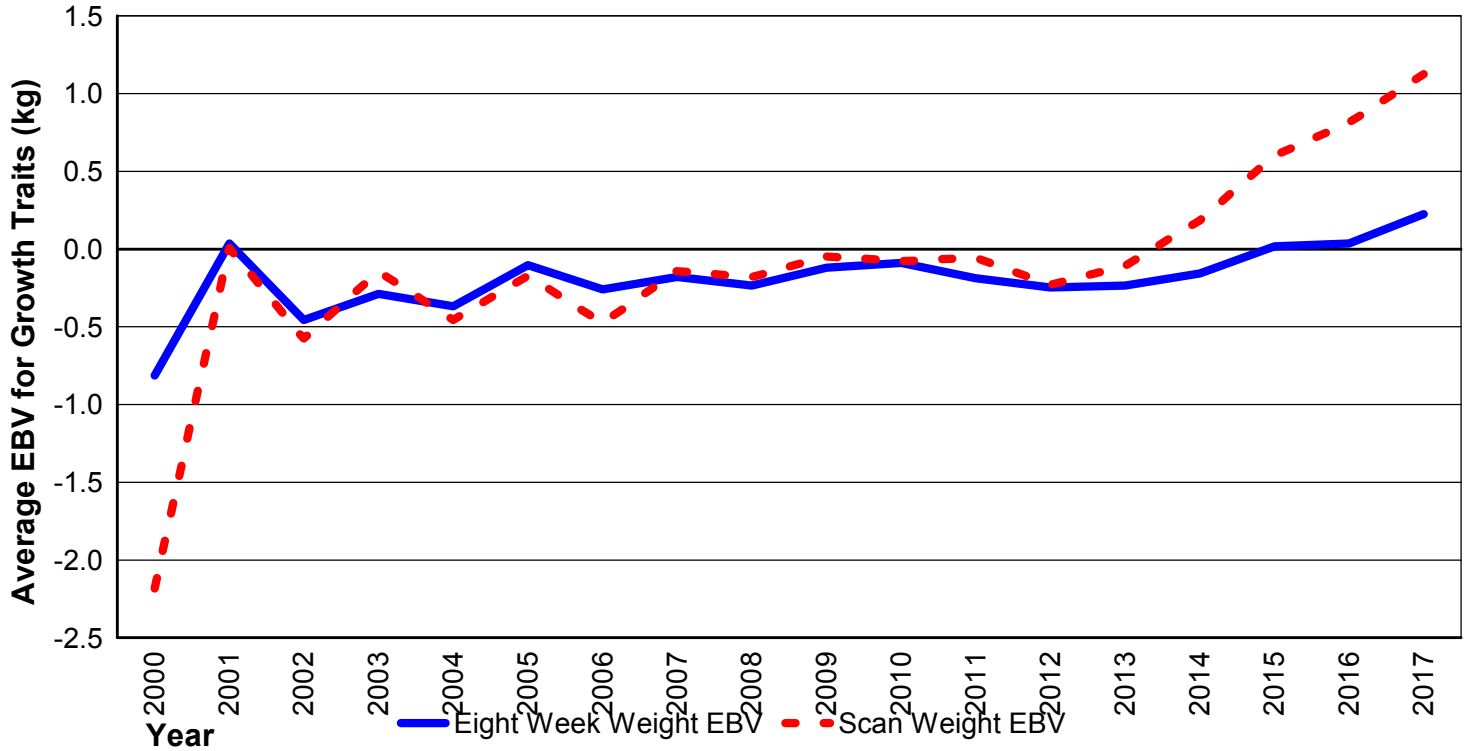
BLUP Run Number: 20085209 - 24/07/2018 -

2000 (01/08/1999 - 31/07/2000)

Number of Lambs: 3,806  
Average 8 week weight EBV 0.224  
Average mature size EBV 1.347  
Average litter size EBV 0.04  
Average maternal ability EBV 0.41  
Average scan weight EBV 1.12  
Average muscle depth EBV 0.18  
Average fat depth EBV 0.06  
Average lean weight EBV 0.28  
Average fat weight EBV 0.34  
Average gigot muscularity EBV 0.00  
Average FEC EBV 0.00  
Average 109.04  
Average Index 0.00

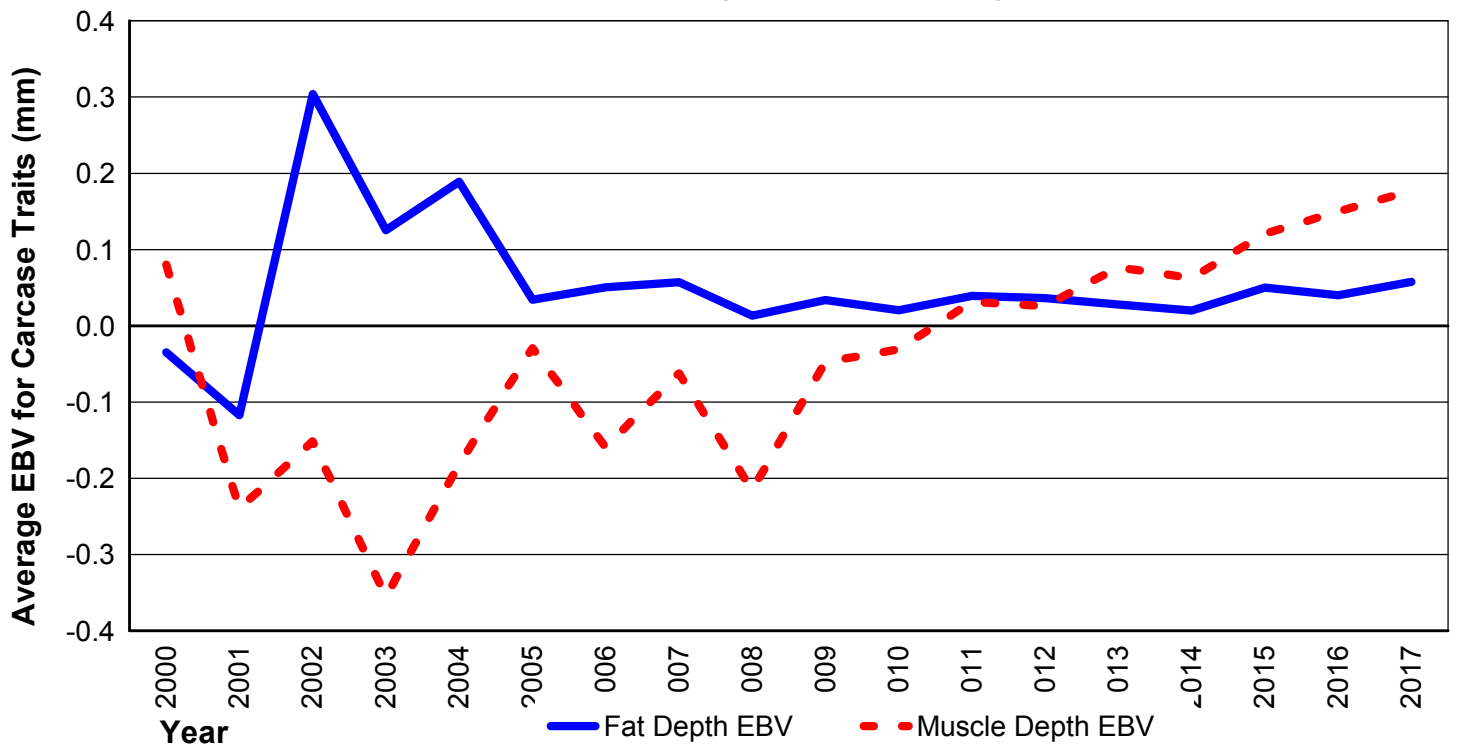
## Shedding Composite Genetic Trends 2017

Eight Week Weight and Scan Weight



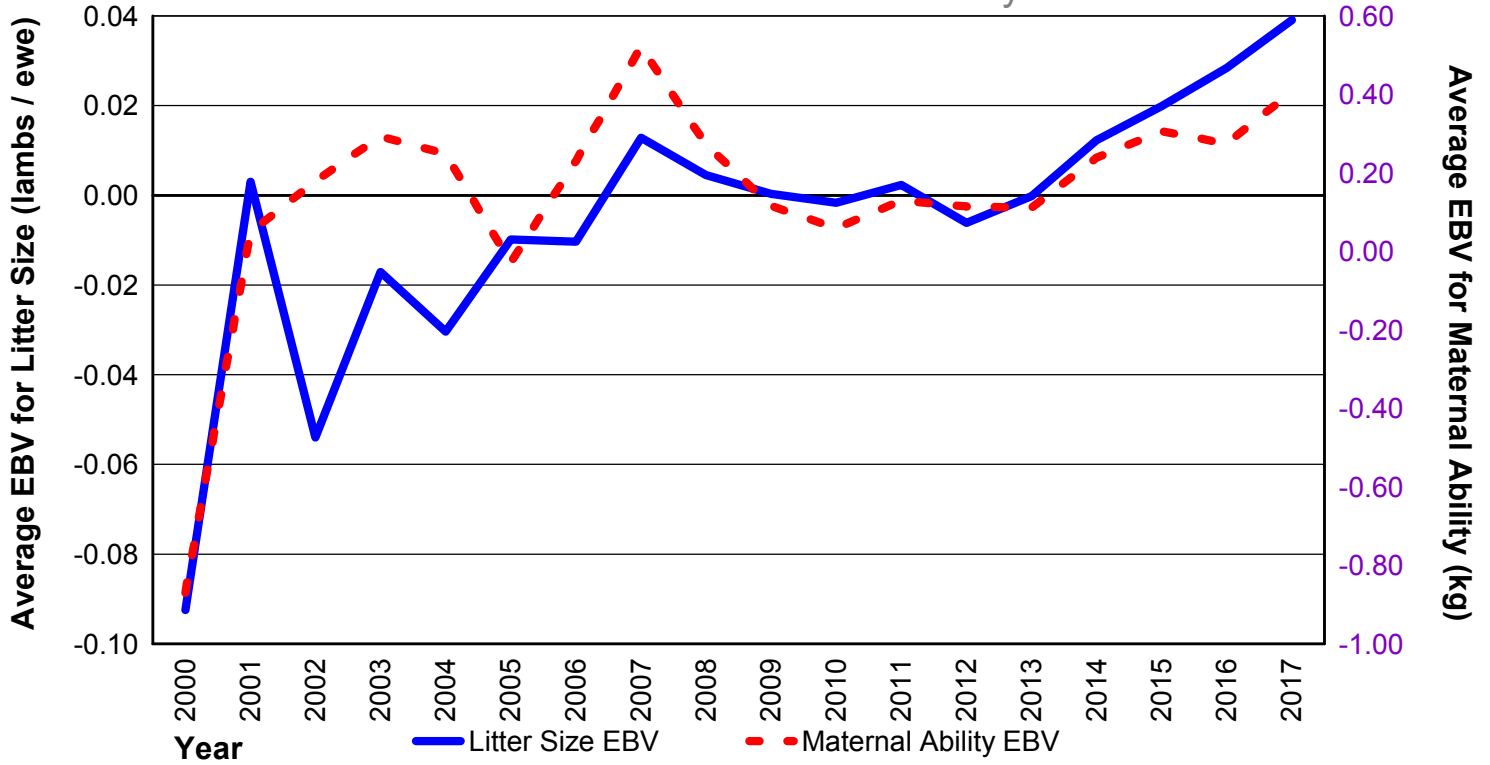
## Shedding Composite Genetic Trends 2017

Muscle Depth and Fat Depth

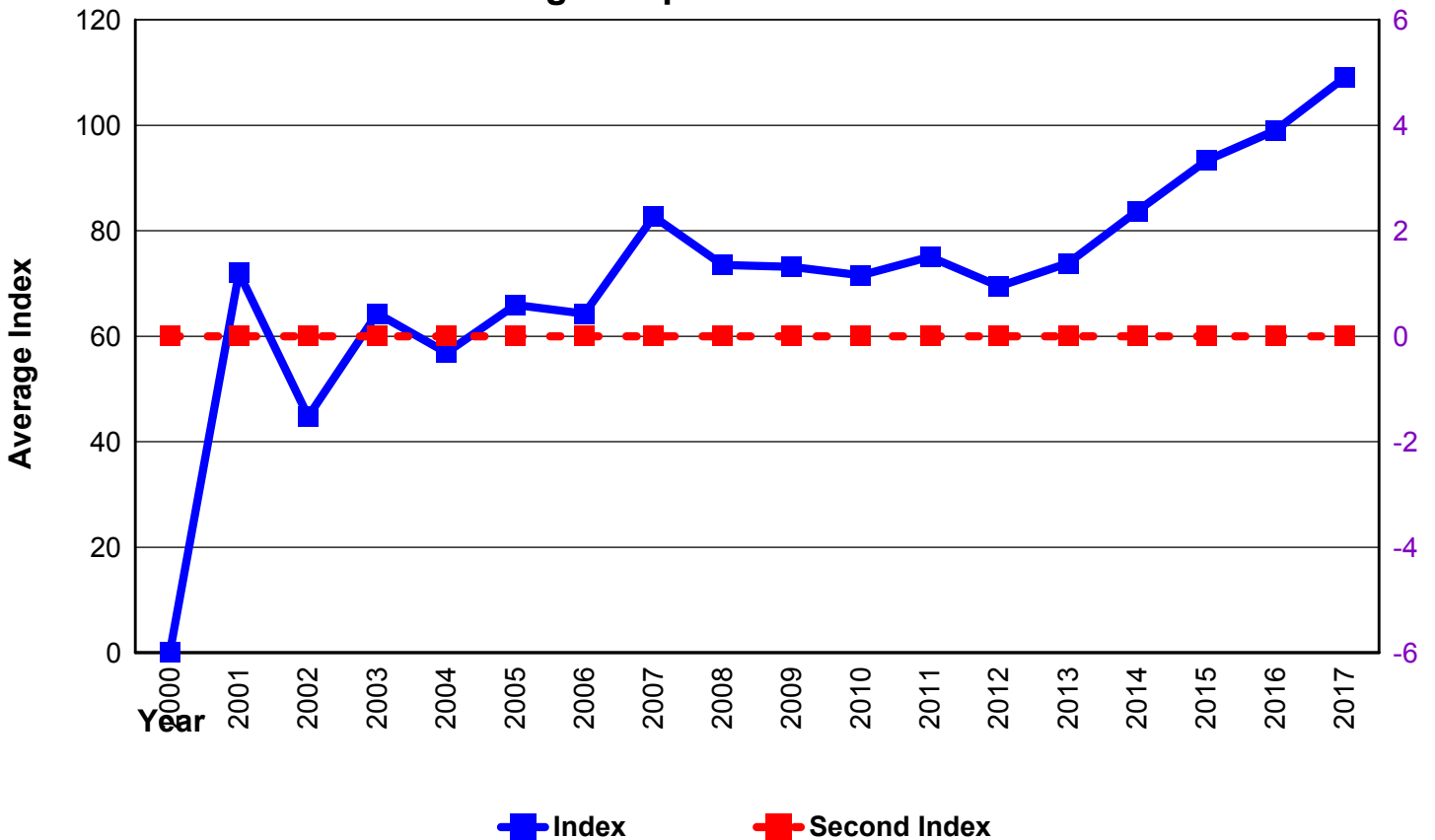


## Shedding Composite Genetic Trends 2017

### Litter Size and Maternal Ability



## Shedding Composite Genetic Trends 2017



BLUP Run Number: 20085209 - 24/07/2018 -

2000 (01/08/1999 - 31/07/2000)

20085209/25-07-2018/4

R:\Sheep\Blup reports 1 index\shedding comp special reports\shedding comp GeneticTrends - NEW.rpt

25/07/2018 15:01:43