

Year	No Lambs	8 Wk Weight	Mature Size	Litter Size	Maternal Ability	Scan Weight	Muscle Depth	Fat Depth	Lean Weight	Fat Weight	Gigot Musc'	FEC	HILL Index	Index	BLUP Run ID
2000	4	-0.81	-3.12	-0.10	-0.88	-2.17	0.06	-0.02	-0.34	-0.42	0.00	0.00	-1.52	0.00	20085248
2001	10	0.04	-0.65	0.00	0.05	0.00	-0.24	-0.12	0.10	-0.10	0.00	0.00	71.74	0.00	20085248
2002	5	-0.46	0.13	-0.05	0.18	-0.60	-0.16	0.31	-0.60	0.48	0.00	0.00	44.22	0.00	20085248
2003	48	-0.29	0.55	-0.02	0.30	-0.16	-0.36	0.13	-0.49	0.13	0.00	0.00	63.84	0.00	20085248
2004	75	-0.37	0.09	-0.03	0.25	-0.47	-0.19	0.19	-0.47	0.26	0.00	0.00	56.38	0.00	20085248
2005	466	-0.10	-0.11	-0.01	-0.03	-0.17	-0.03	0.03	-0.10	0.03	0.00	0.00	65.85	0.00	20085248
2006	214	-0.26	-0.33	-0.01	0.23	-0.46	-0.16	0.05	-0.26	0.03	0.00	0.00	64.46	0.00	20085248
2007	251	-0.18	0.38	0.01	0.52	-0.13	-0.06	0.06	-0.20	0.03	0.00	0.00	82.80	0.00	20085248
2008	915	-0.23	0.13	0.00	0.27	-0.16	-0.21	0.01	-0.25	-0.06	0.00	0.00	73.82	0.00	20085248
2009	1,624	-0.12	0.14	0.00	0.12	-0.04	-0.05	0.03	-0.11	0.03	0.00	0.00	73.04	0.00	20085248
2010	3,076	-0.09	0.03	0.00	0.06	-0.08	-0.03	0.02	-0.08	0.01	0.00	0.00	71.36	0.00	20085248
2011	1,975	-0.18	0.03	0.00	0.13	-0.06	0.03	0.04	-0.07	0.04	0.00	0.00	74.97	0.00	20085248
2012	3,473	-0.25	-0.18	-0.01	0.12	-0.24	0.02	0.03	-0.10	0.00	0.00	0.00	69.21	0.00	20085248
2013	3,357	-0.23	0.03	0.00	0.11	-0.11	0.07	0.03	-0.07	-0.04	0.00	0.00	73.73	0.00	20085248
2014	3,403	-0.15	0.29	0.01	0.24	0.21	0.06	0.02	0.02	0.05	0.00	0.00	83.97	0.00	20085248
2015	3,667	0.02	0.70	0.02	0.31	0.55	0.09	0.04	0.11	0.19	0.00	0.00	91.84	0.00	20085248
2016	3,946	0.02	0.85	0.03	0.30	0.66	0.10	0.03	0.13	0.15	0.00	0.00	96.46	0.00	20085248
2017	3,806	0.23	1.32	0.04	0.43	1.10	0.14	0.05	0.26	0.32	0.00	0.00	108.83	0.00	20085248
2018	3,584	0.26	1.69	0.05	0.56	1.36	0.24	0.08	0.33	0.44	0.00	0.00	119.19	0.00	20085248

BLUP Run Number: 20085248 - 19/09/2018 -

2000 (01/08/1999 - 31/07/2000)

Number of Lambs: 3,584  
Average 8 week weight EBV 0.259  
Average mature size EBV 1.686  
Average litter size EBV 0.05  
Average maternal ability EBV 0.56  
Average scan weight EBV 1.36  
Average muscle depth EBV 0.24  
Average fat depth EBV 0.08  
Average lean weight EBV 0.33  
Average fat weight EBV 0.44  
Average gigot muscularity EBV 0.00  
Average FEC EBV 0.00  
Average 119.19  
Average Index 0.00

BLUP Run Number: 20085248 - 19/09/2018 -

2000 (01/08/1999 - 31/07/2000)

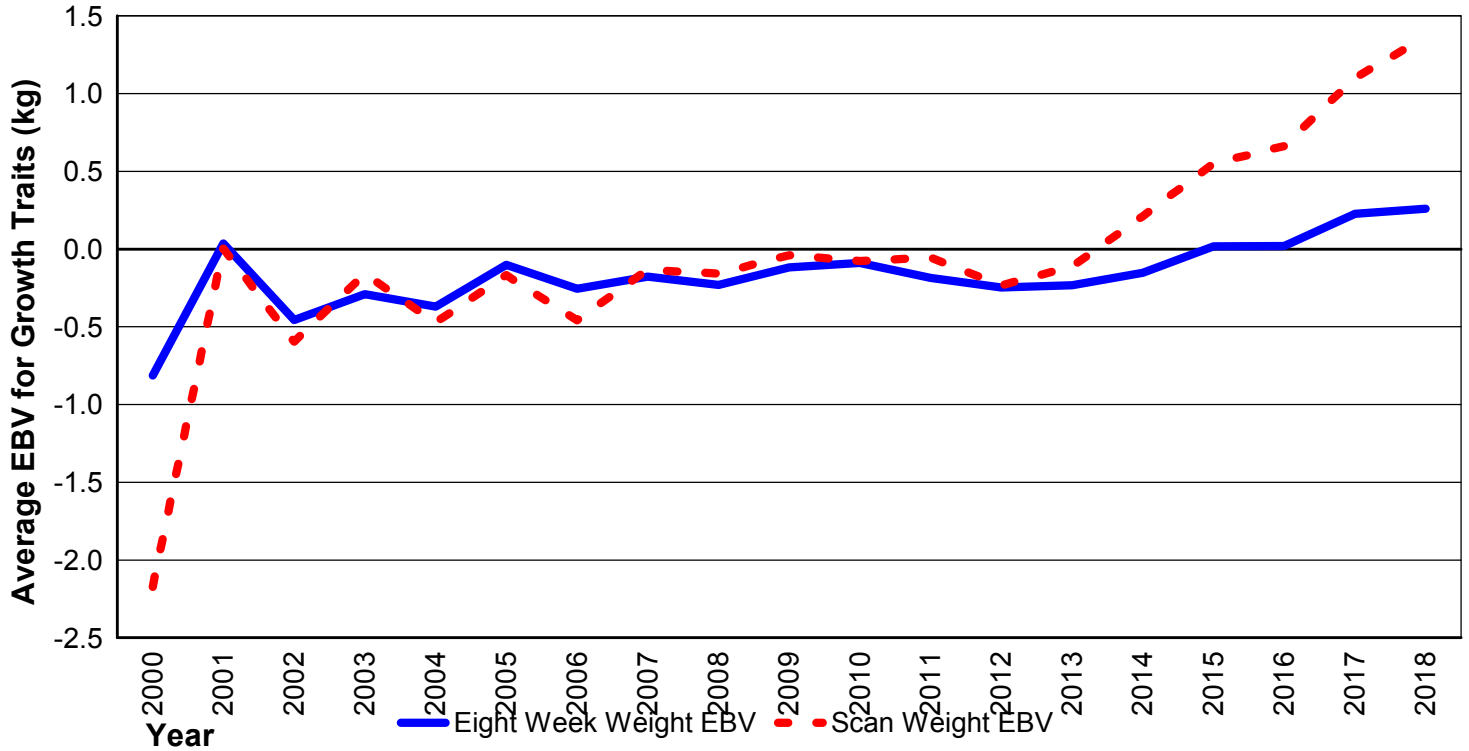
20085248/21-09-2018/2

R:\Sheep\Blup reports 1 index\shedding comp special reports\shedding comp GeneticTrends - NEW.rpt

21/09/2018 12:31:36

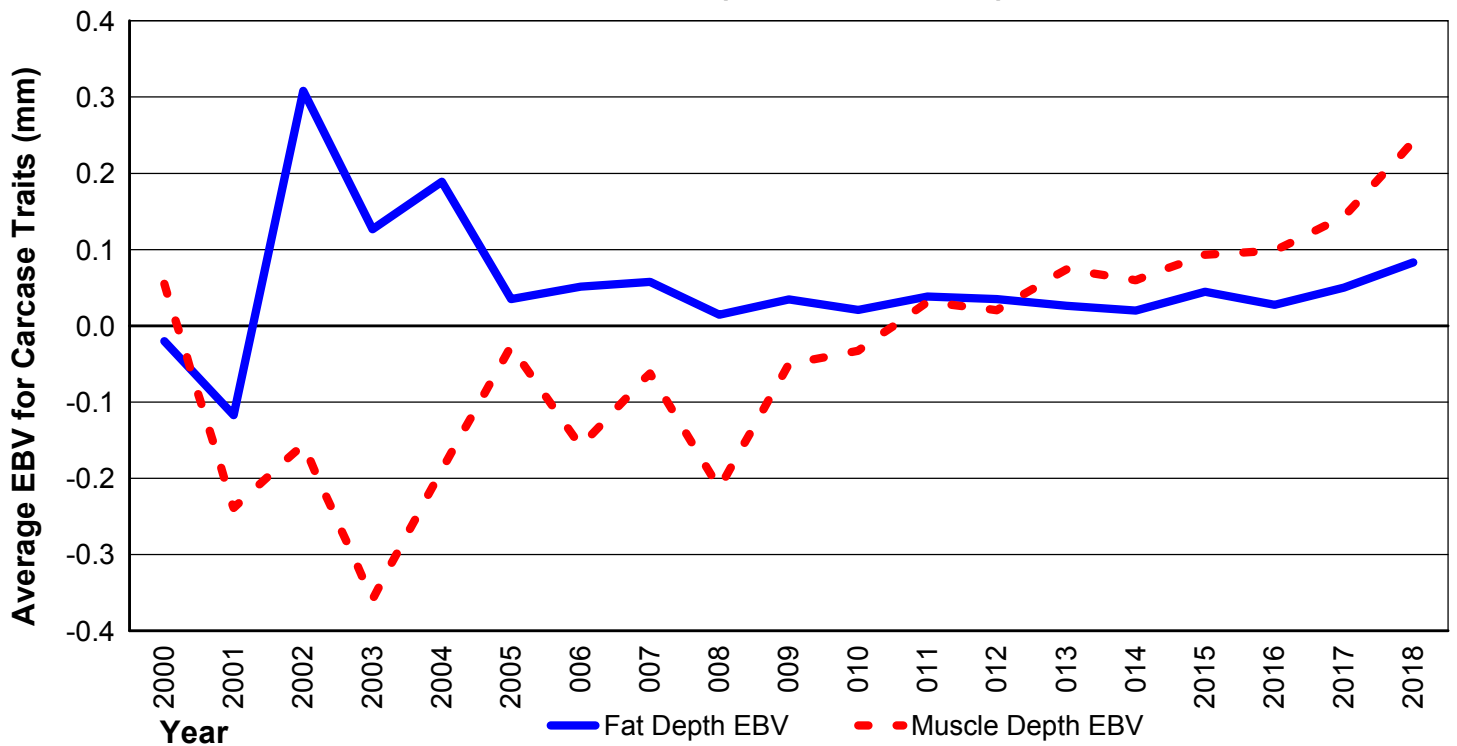
## Shedding Composite Genetic Trends 2018

Eight Week Weight and Scan Weight



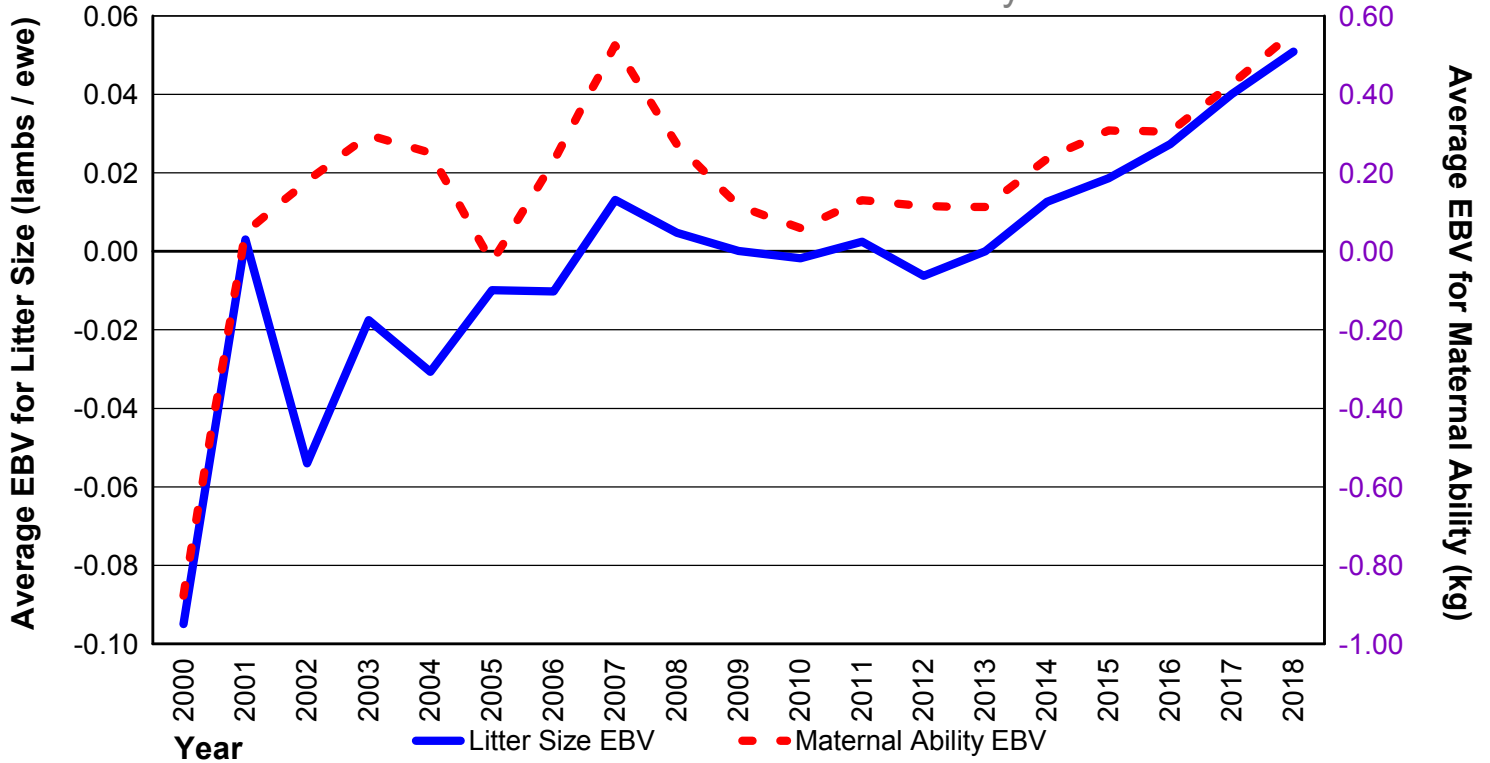
## Shedding Composite Genetic Trends 2018

Muscle Depth and Fat Depth

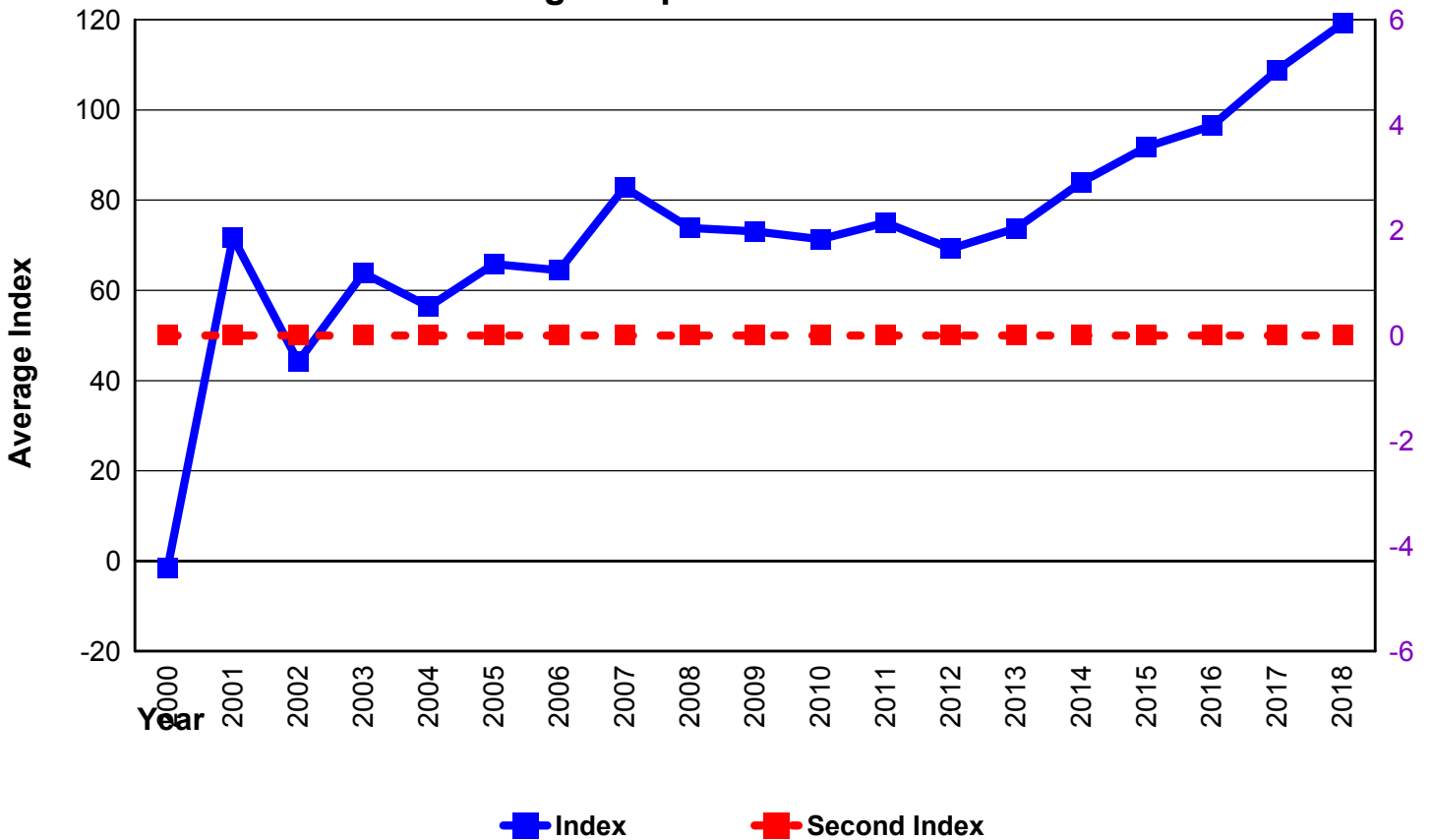


## Shedding Composite Genetic Trends 2018

### Litter Size and Maternal Ability



## Shedding Composite Genetic Trends 2018



BLUP Run Number: 20085248 - 19/09/2018 -

2000 (01/08/1999 - 31/07/2000)

20085248/21-09-2018/4

R:\Sheep\Blup reports 1 index\shedding comp special reports\shedding comp GeneticTrends - NEW.rpt

21/09/2018 12:31:36