

WILTSHIRE HORN GENETIC TRENDS

Year	No Lambs	8 Wk Weight	Mature Size	Litter Size	Maternal Ability	Scan Weight	Muscle Depth	Fat Depth	Lean Weight	Fat Weight	Gigot Musc'	FEC	Index
2000	166	-0.28	0.15	0.07	0.34	-0.51	-0.14	-0.24	0.00	0.00	0.00	0.00	104.55
2001	177	-0.20	0.06	0.03	0.34	-0.32	-0.27	-0.30	0.00	0.00	0.00	0.00	101.48
2002	233	-0.13	0.21	0.05	0.31	-0.13	-0.14	-0.27	0.00	0.00	0.00	0.00	105.57
2003	307	-0.21	0.01	0.02	0.19	-0.36	-0.22	-0.24	0.00	0.00	0.00	0.00	89.90
2004	388	-0.12	0.31	0.01	0.24	-0.16	0.01	-0.22	0.00	0.00	0.00	0.00	98.45
2005	243	-0.14	-0.30	-0.02	0.01	-0.15	-0.08	-0.13	0.00	0.00	0.00	0.00	78.65
2006	406	-0.11	0.05	0.03	0.09	-0.10	-0.08	-0.19	0.00	0.00	0.00	0.00	90.06
2007	935	-0.07	-0.14	-0.01	0.20	-0.05	0.04	-0.05	0.00	0.00	0.00	0.00	94.85
2008	911	0.07	0.13	-0.01	0.22	0.18	0.16	0.02	0.00	0.00	0.00	0.00	100.65
2009	892	0.16	0.39	-0.01	0.15	0.33	0.21	0.03	0.00	0.00	0.00	0.00	100.26
2010	862	0.28	0.33	0.02	0.16	0.67	0.43	0.14	0.00	0.00	0.00	0.00	110.77
2011	884	0.45	0.38	0.02	0.39	1.13	0.55	0.15	0.00	0.00	0.00	0.00	131.80
2012	796	0.51	0.36	0.00	0.43	1.18	0.63	0.28	0.00	0.00	0.00	0.00	134.94
2013	779	0.57	0.41	0.00	0.56	1.34	0.65	0.26	0.00	0.00	0.00	0.00	145.90
2014	812	0.84	0.59	0.00	0.54	1.88	0.85	0.41	0.00	0.00	0.00	0.00	154.43
2015	543	0.69	0.66	0.03	0.42	1.63	0.81	0.29	0.00	0.00	0.00	0.00	145.84
2016	596	0.73	0.72	0.03	0.50	1.71	0.81	0.30	0.00	0.00	0.00	0.00	152.07
2017	644	0.59	0.50	0.07	0.40	1.47	0.59	0.17	0.00	0.00	0.00	0.00	143.29
2018	689	0.62	0.64	0.08	0.34	1.53	0.62	0.19	0.00	0.00	0.00	0.00	142.47

BLUP Run Number: 20085253 - 03/10/2018

2000 (01/08/1999 - 31/07/2000)

Number of Lambs: 689

Average 8 week weight EBV 0.625

Average mature size EBV 0.639

Average litter size EBV 0.08

Average maternal ability EBV 0.34

Average scan weight EBV 1.53

Average muscle depth EBV 0.62

Average fat depth EBV 0.19

Average lean weight EBV 0.00

Average fat weight EBV 0.00

Average gigot muscularity EBV 0.00

Average FEC EBV 0.00

Average 142.47

Average Index

BLUP Run Number: 20085253 - 03/10/2018

2000 (01/08/1999 - 31/07/2000)

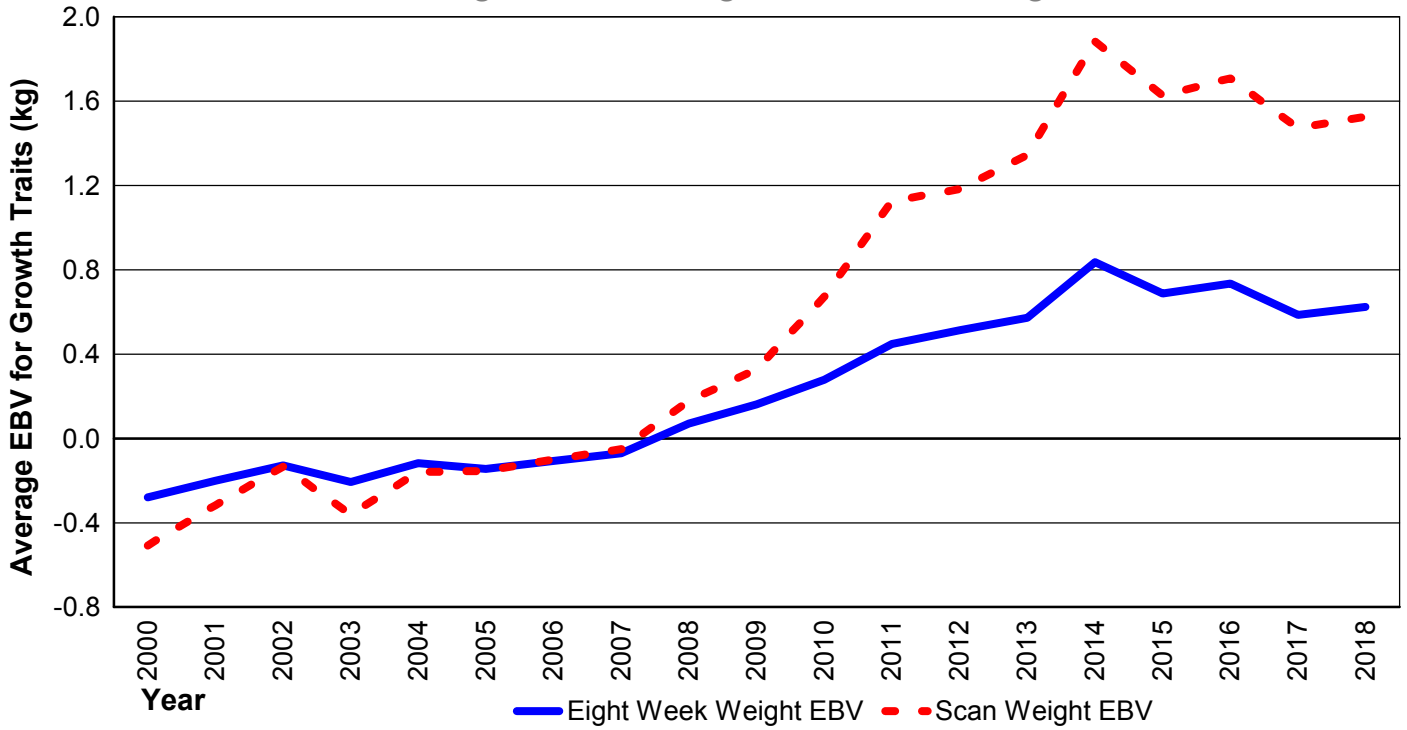
20085253/04-10-2018/2

R:\Staff - Kay\1Genetic trends for breed.rpt

20/08/2018 14:52

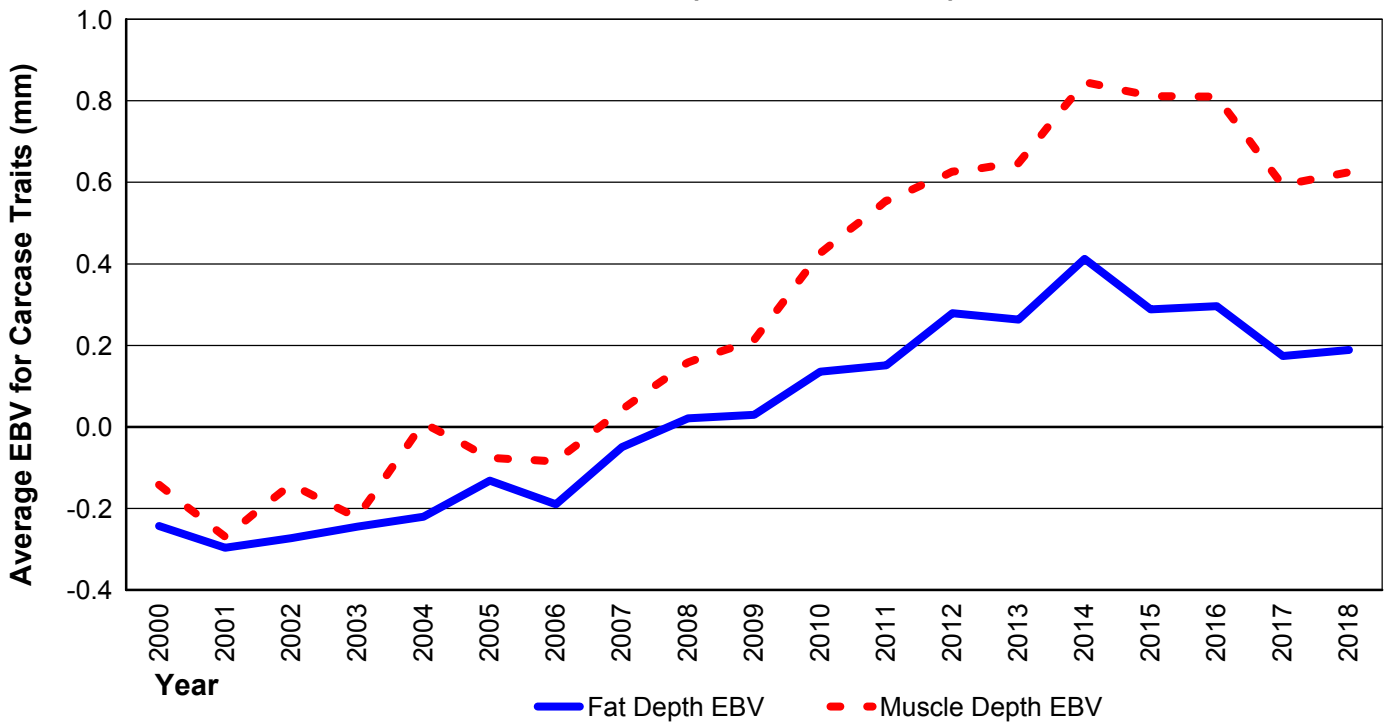
WILTSHIRE HORN GENETIC TRENDS 2018

Eight Week Weight and Scan Weight



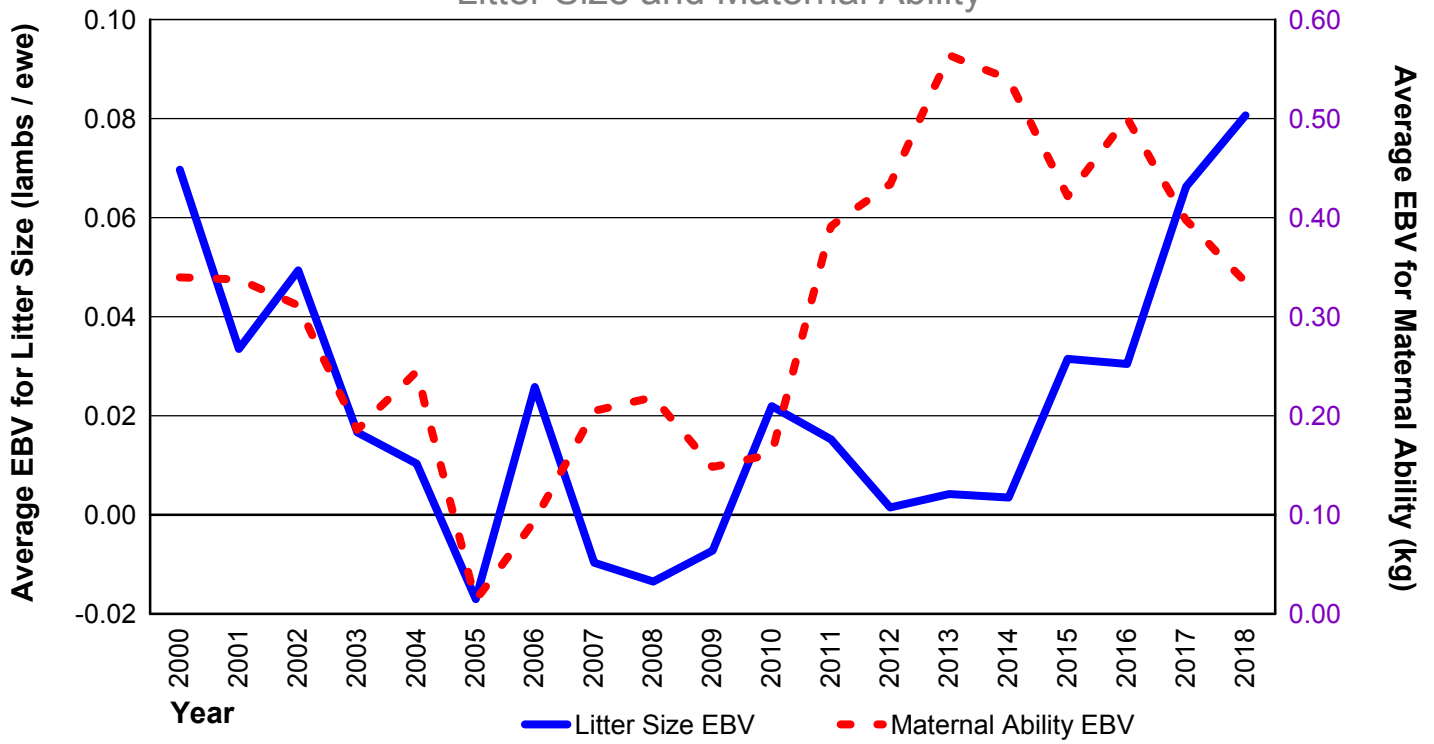
WILTSHIRE HORN GENETIC TRENDS 2018

Muscle Depth and Fat Depth



WILTSHIRE HORN GENETIC TRENDS 2018

Litter Size and Maternal Ability



GENETIC GAIN IN INDEX

